

# GAMIFICATION

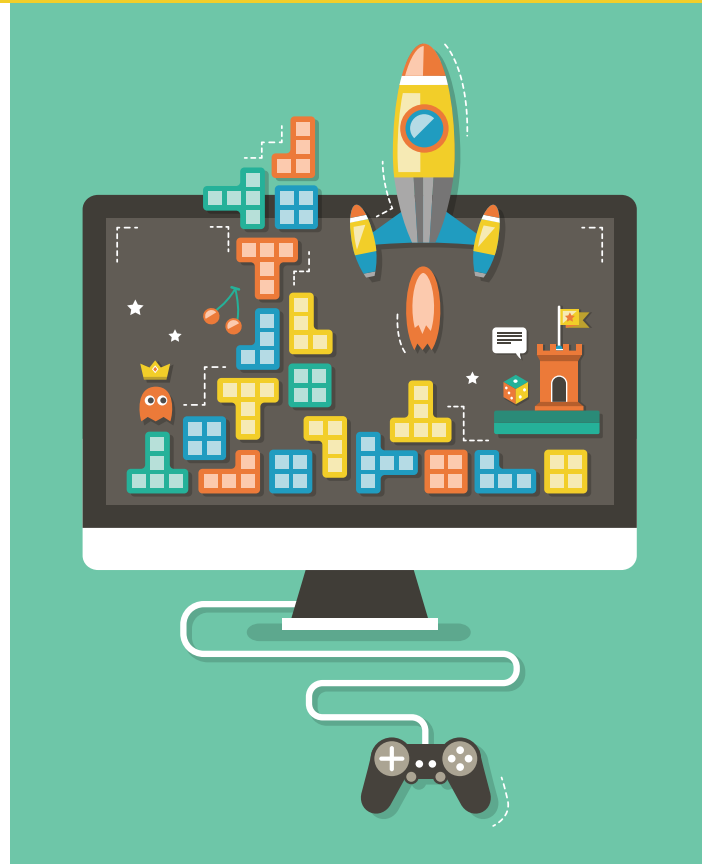
An Evidence Based Approach to Understanding and Creating Learning Games

Presented by Dr. Lynn Hummel and Dr. Karl Kapp of Bloomsburg University

Under the right conditions, learning occurs in games. But learning doesn't occur in all games, even ones intended to lead to learning.

## WHY? WHAT MAKES A GAME EFFECTIVE FROM A LEARNING PERSPECTIVE?

Learn research-based recommendations for using games in K-12 curriculum. Discover game features that lead to impactful learning outcomes.



**Date:** Thursday, October 19, 2017  
**Time:** 9am – 3pm  
**Cost:** \$75 for subscribers  
\$100 for non-subscribers  
**Register:** [www.mciu.org/register](http://www.mciu.org/register)  
**Contact:** Please contact Lois Winton with any questions: (610) 755-9315 or [lwinton@mciu.org](mailto:lwinton@mciu.org).